



## Minimising risks, maximising opportunities



Related to these and other SDGs

The rising demand for critical (transition) minerals and metals creates crucial risks and opportunities for supplying countries. Environmental and social assessment is a powerful starting point to map these pros and cons. In most countries in the world environmental and social assessment is legally defined. That is for a reason: a proper assessment gives clear guidance on how to minimise risks and how to maximise opportunities for **People, Planet, Profit, Peace, and Partnership**. It also helps to involve and inform stakeholders through underpinned and plausible communication.

## For strategies and projects

Environmental and social assessment is legally adopted by almost all countries around the world. It can be performed at two levels of decision making: the strategic level and the project level.

**Strategic Environmental Assessment (SEA):** Decision making on plans or policies, such as a land use plan or national mining strategy.

**Environmental and Social Impact Assessment (ESIA):** Decision making on projects, such as a new landfill or a wind park. ESIA is even more effective when SEA is in place.

ESIA & SEA assess the **compatibility** of a proposed project / plan with (inter)national policies and agreements.

What are the national and global objectives, norms and standards for mining? Which ones are relevant for this project?

How can our community benefit from this mine? And how will the rights and opinions of artisanal miners be addressed?

SEA & ESIA provide a roadmap for **informing and involving stakeholders**, including specific groups.

Authority

Community member

Environmental organisation

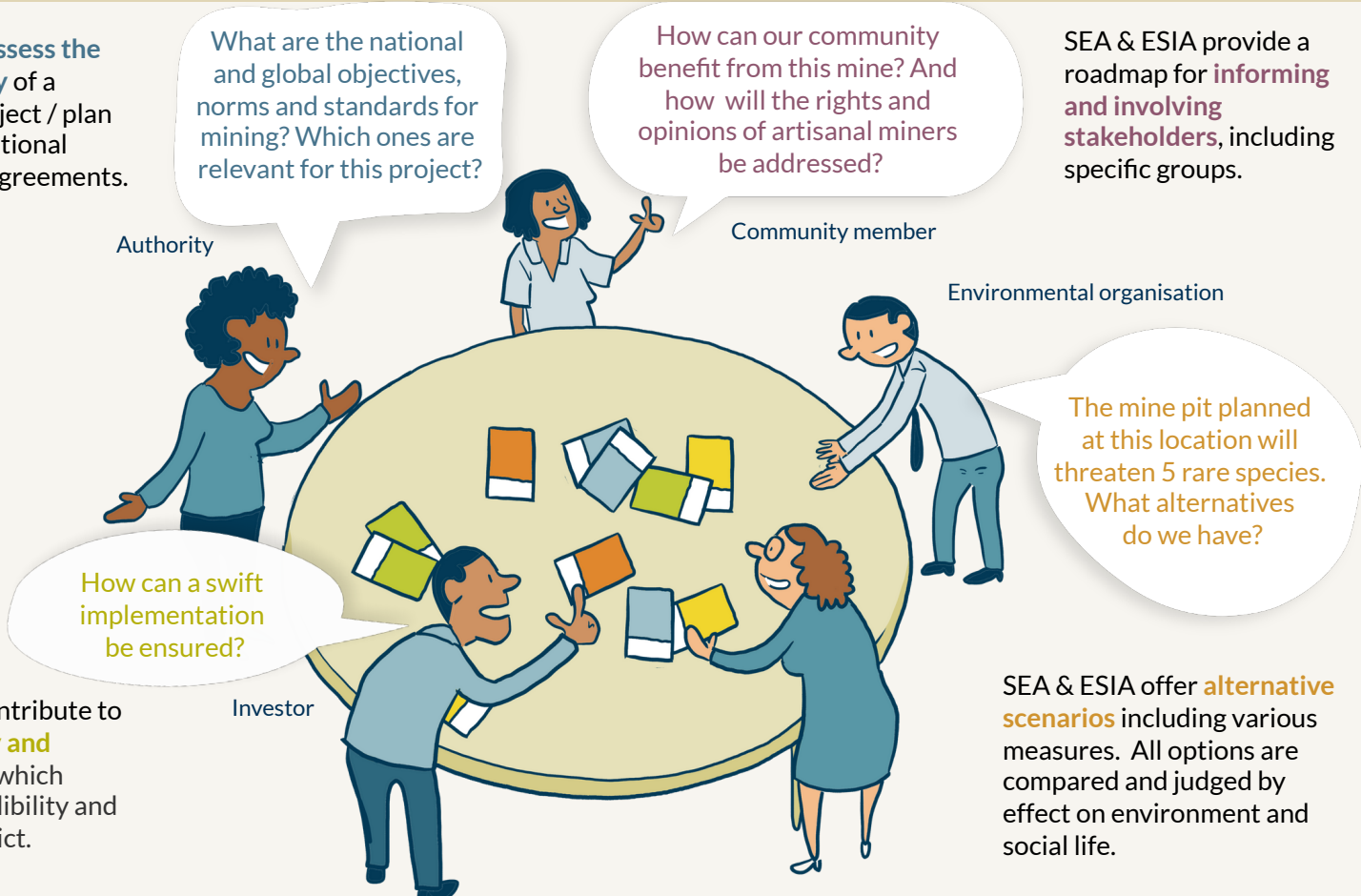
How can a swift implementation be ensured?

The mine pit planned at this location will threaten 5 rare species. What alternatives do we have?

Investor

ESIA & SEA contribute to **accountability and transparency** which enhances credibility and prevents conflict.

SEA & ESIA offer **alternative scenarios** including various measures. All options are compared and judged by effect on environment and social life.



# Expertise Independency Transparency

The Netherlands Commission for Environmental Assessment has more than 30 years of experience in supporting governmental organisations in the Netherlands and abroad with SEA and ESIA. Our expertise includes: independent advice at the request of governments, coaching, capacity building and knowledge & learning activities. We follow national legislation and apply international good practice.



## Examples of recent activities of the NCEA

**September 2023** - Independent advice on rehabilitation plan for the abandoned sand quarry of Kamb Souf in the Diourbel region  
> [Senegal](#)

**August 2023** - In cooperation with IGF, workshop on ESIA for mine closure for seven member countries of the of the West African Economic and Monetary Union (WAEMU)  
> [West-Africa](#)

**May 2023** - Review of the draft Terms of Reference for the environmental and social impact assessment of the Niou mining project in Burkina Faso. > [Burkina Faso](#)

**March 2023** - Workshop to assess the Environmental and Social Impact Assessment approach for the mining sector in cooperation with IGF. > [Mali](#)

All NCEA advisory reports are available at [www.ncea.nl](http://www.ncea.nl)

## What does the NCEA look for in an environmental and social assessment process?

### Quality of information

Does the process deliver all information needed for decision making, such as impacts, alternative options, mitigation measures and impact management measures?

### Dialogue

Does the process engage affected stakeholders in a timely, transparent and inclusive way?

### Influence

Does the process address relevant issues and provide usable information for decision makers? Is this done at the right time? Can decision makers be held accountable for their use of the assessment outcomes?

## Contact us

### Joyce Kortlandt

Technical Secretary

Contact person for Responsible mining

✉ [jkortlandt@eia.nl](mailto:jkortlandt@eia.nl)

☎ +31 30 234 76 14



Netherlands Commission  
for Environmental Assessment

[www.eia.nl](http://www.eia.nl)

